



HF-EXD600-12L/YZ35
Flow Rate Range: 0.69~12000 mL/min



HF-EXD600-3L/DZ25-3L
Flow Rate Range: 0.211~3600 mL/min



HF-EXD600-6L/DZ25-6L
Flow Rate Range: 0.3~6000 mL/min



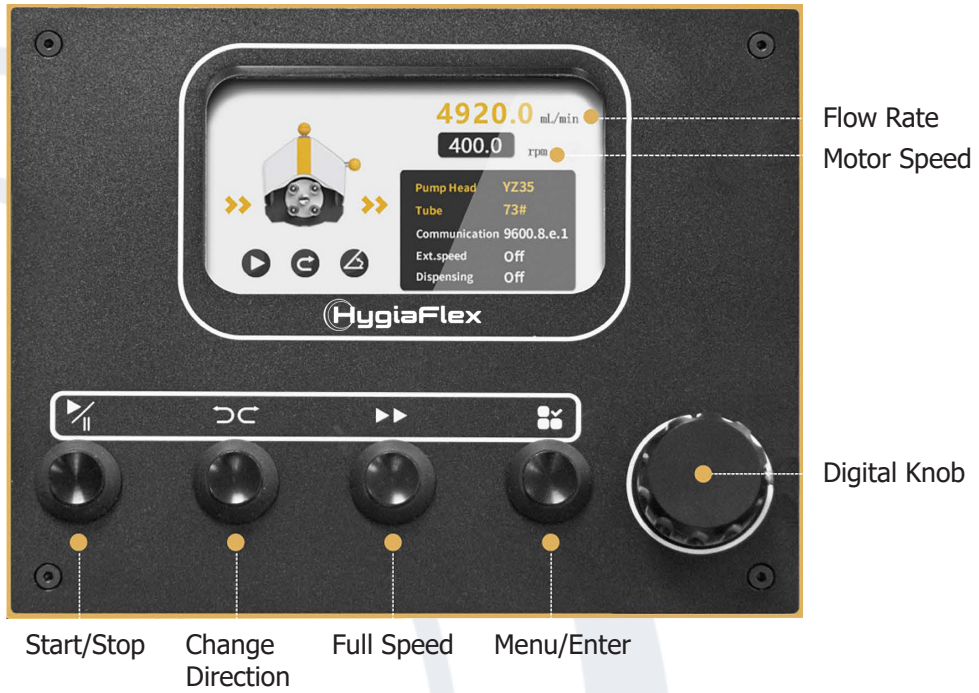
HF-EXD300-30L
Flow Rate Range: 1000~28150 mL/min

• Features

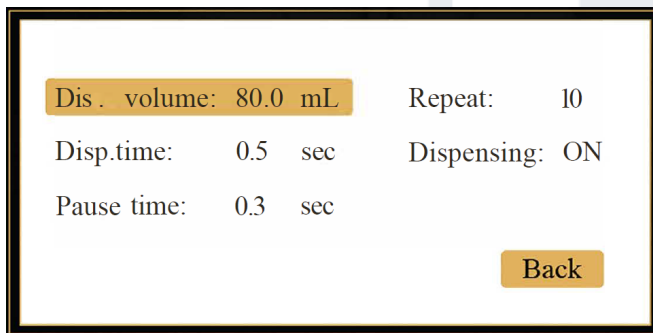
- Explosion-proof peristaltic pump, with cast aluminum housing, special for industrial application.
- Explosion-proof grade: ExdbIICT4 Gb/ExtbIIICT130°CDB.
- IP66 for wet and dusty environment.
- 4.3 inch LCD screen display flow rate and motor speed.
- Keypad and digital knob control, easy and convenient.
- Maximum flow rate up to 24L with 2*YZ35 pump head.
- Two working mode: Continuous transferring and dispensing.
- Support RS485 communication and analog signal control.

HF-EXD600 12L/YZ35

- Main Interface



- Dispensing Interface



- Pump Head (Aluminum Alloy)



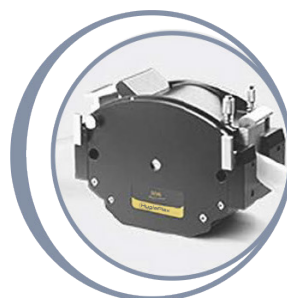
DZ25-3L



DZ25-6L



YZ35



DZ45

- Flow Rate Chart

Drive Model	Pump Head	Tubing Size	Flow Rate Range (ml/min)
HF-EXD600-3L	DZ25-3L	15# 24# 35# 36#	0.211~3600
HF-EXD600-6L	DZ25-6L	15# 24# 35# 36#	0.3~6000
HF-EXD600-12L	YZ35	26# 73# 82#	0.69~12000
HF-EXD300-30L	DZ45	88# 92#	1000~28150

- Technical Specifications

Speed range	0.1-600rpm	Power Supply	AC220V±10%, 50Hz/60Hz
Speed resolution	0.1rpm	Consumption	<50W
Operation	Mechanical keypad + digital knob	Communication	RS485, Modbus protocol (RTU mode)
Display	4.3" LCD screen	Dimension (L×W×H)	537×283×336mm
Analog signal control speed	0-SV, 0-10V, 4-20mA	Relative humidity	<80%
Start/stop, reversing signal	Passive switch signal, such as foot pedal; Active switch signal: SV, 12V and 24V for option	Environment temperature	0-40°C
Weight	35kg	IP rate	IP66

- Dimension Drawing

(Unit:mm)

